



KONICA MINOLTA

Giving Shape to Ideas

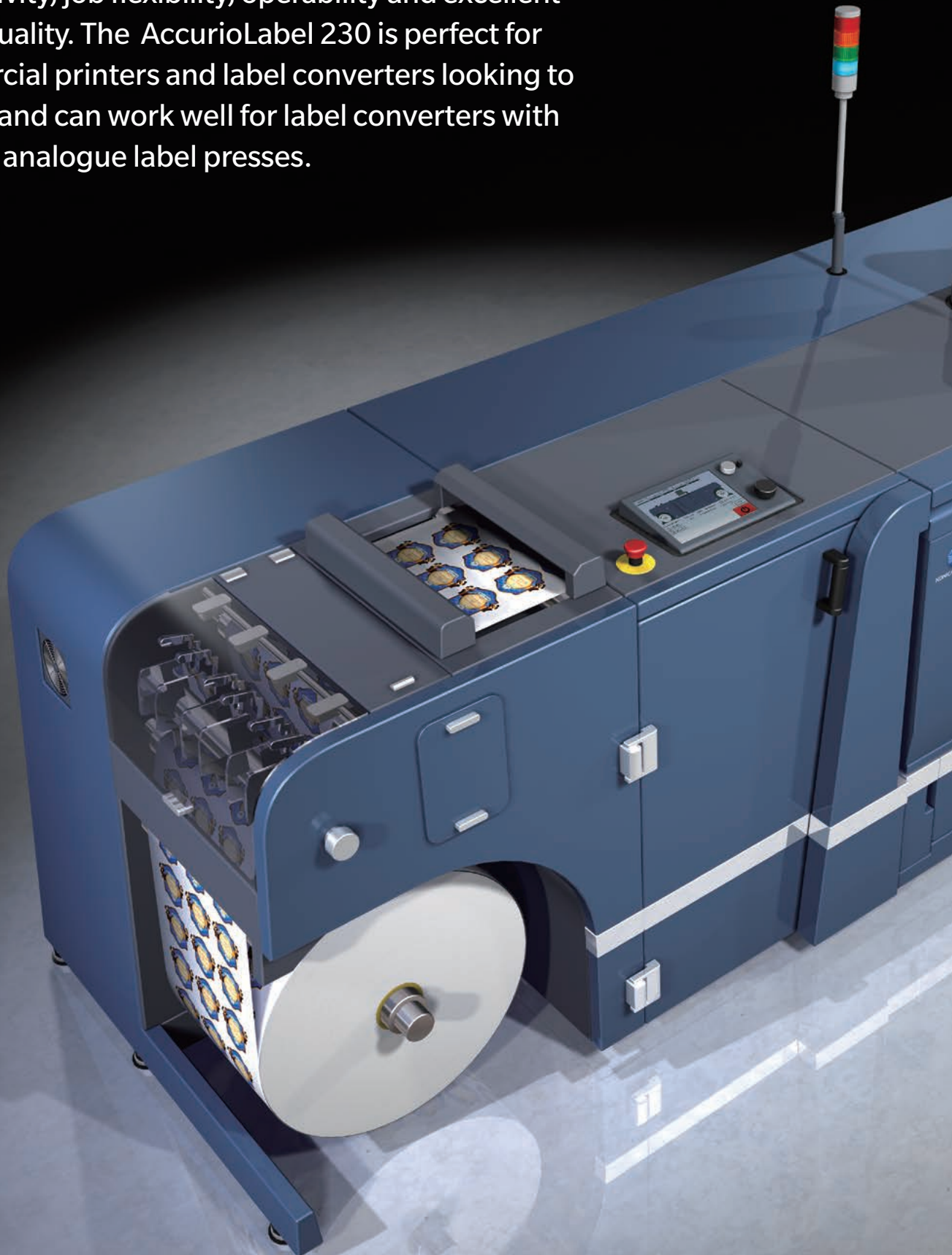
# FULL COLOUR LABEL PRINTING SYSTEM



AccurioLabel  
230

# The AccurioLabel 230

A digital label printing system that offers enhanced productivity, job flexibility, operability and excellent image quality. The AccurioLabel 230 is perfect for commercial printers and label converters looking to expand and can work well for label converters with existing analogue label presses.





## At a glance

### High performance in compact system

- High productivity with maximum print speed of 23.4 m/min
- Excellent image quality to meet a variety of needs
- Wide media compatibility without pre-treatment
- Small foot print
- Intuitive operation
- Sophisticated colour management features
- Superb colour stability

FLEXIBILITY

QUALITY

Perfect Fit

PRODUCTIVITY



# Digital label printing

## Merits of introducing digital printing

Label converters and print companies are challenged by market demands for shorter turnarounds and shorter runs more and more. Their customers are looking for shorter-runs, faster and are seeking a variety of applications. With a digital label press, like the

AccurioLabel 230, orders that were once difficult to handle with analogue presses can now be handled more efficiently. Greater value can be added to the print product using VDP or numbering, helping to differentiate the user amongst their market.

### Difficulties with analogue press

**To prepare a job, work including colour adjustment and ink cleaning, etc, is required.**

- 1 The printing plate needs to be changed for each print job.
- 2 Substantial print waste is generated producing sample prints (especially roll-fed press).
- 3 Expertise and skillful operators are required.

### Merits of digital press

**Print data can be directly output from PC**

- 1 Tasks to set up the print job including paper replacement or colour adjustment can be performed as required.
- 2 Stable quality is ensured from the first sheet of the job onwards, reducing print wastage.
- 3 Simply follow the output or maintenance instructions displayed on the screen.

The AccurioLabel 230 with its superb productivity, image quality and operability as well as its economical features makes it ideal for those wishing gain a foothold in the label market and requiring parallel use with existing analogue presses.

### Digital printing applications

Short-run label printing

Labels for local products

Label design sample printing

Labels for events or special occasions

Labels with variable data content

Personalised labels



## The AccurioLabel 230 is able to meet a wide range of diversifying needs

### Thin line expression

Thin lines in complex line images are faithfully reproduced by the edge treatment function.

### Solid density

Solid black areas with high image density can be expressed with a suitable glossy appearance.

### Photographic image quality

Realisation of stable, high image quality by multi-gradation data processing and an expansive colour gamut.

### Variable data printing

Content can be changed for each sheet, depending on the customers requirement.

### Barcode printing

Small barcodes can be printed without blurring. Variable barcodes can also be printed.

### Small point characters

Small characters are vividly printed to ensure ease of reading.

### Reproduction of skin-tone

Roughness of the skin can be suppressed to reproduce richly-textured human skin tones.

### Gradations

An abundance of gradation expressions helps achieve a natural finish.



# Enhanced productivity & flexibility

To meet the demands of digital printing businesses including shorter turnaround and expansion of print applications, the AccurioLabel 230 improves overall productivity and job versatility and includes overprinting capability on pre-printed transparency or coloured media. The demand for digital is growing rapidly as the market expects shorter turnarounds and expanding print applications.

## Enhanced productivity

### Fast print speed up to 23.4m/min.

Most tack papers and tack films can be printed at the maximum print speed of 23.4m/min, enabling you to turn jobs around faster.

## Improved overall productivity

### Short warm-up time

The warm-up time between jobs is minimised as there is no need to turn off the fusing unit between jobs. This improves overall production efficiency and at the same time minimises paper waste.

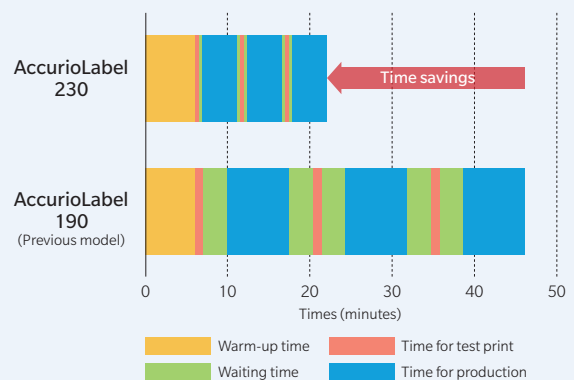
## Extended run length

### Long continuous printing up to 1,000m

The AccurioLabel 230 offers long continuous printing up to 1,000m meaning you can schedule larger production runs without needing to build in switching time and reducing paper wastage. When the toner coverage is low, a print mode that adds colour belts on both sides of paper is available that supplies necessary amount of toner to keep the developer fresh. The colour belts are not necessary when the toner coverage is 3.5% or above.



■ Example of time saving (Printing for 100m x 3jobs)



With the AccurioLabel 230 total production time is reduced to approximately half when compared to its predecessor, the AccurioLabel 190, thanks to enhanced productivity and warm-up time. It results in shorter delivery time to customer and adds to business capability.

## Consideration of operability

### Mouse-compatible operation panel

The large 15-inch display is easy to view and operate. The angle of the panel can be adjusted to suit the user. The easy-to-understand GUI and prompts ensure the press is operated with ease. A USB mouse can also be connected to improve operability.







## Wider print application

### Wide media compatibility without pre-treatment

Thanks to digital toner HDE and Konica Minolta's low-temperature fixation technology, the AccurioLabel 230 is compatible with a wide range of media including not only ordinary and matte paper, but also glossy paper, tack paper and film essential for label production. The user can select the ideal media to match applications and also print labels without the need for pre-processing.

## Printing on transparency or coloured media

### Over printing capability with accurate registration

An over printing kit is provided to enhance the usability. It enables digital 4-colour printing on pre-coated media with accurate registration thanks to the new eye mark sensor.

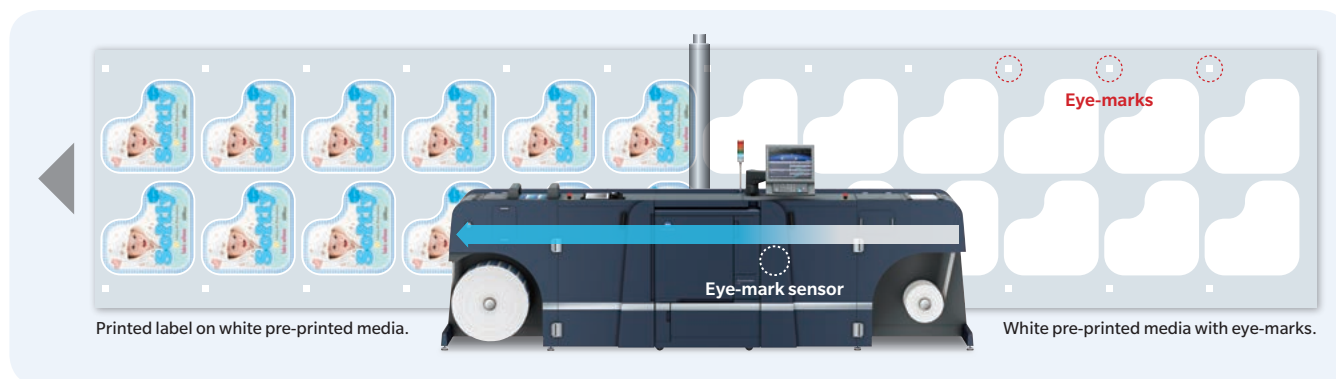
### Label substrates

#### Glossy or matte art paper

For foods or beverages locally produced and sundry goods such as event goods, mementos, etc.

#### YUPO®, PET, PP, etc.

For cosmetic, medical drugs, industrial products, beverages, etc.



## Label printing without compromising on safety

### Food grade safe toner

The toners featured in the AccurioLabel 230 are FDA\* compliant, making them perfect for indirect food packaging labels.

\*The FDA standard is stringent safety standards to the potential product that consumers are in contact with food, pharmaceutical and cosmetic by FDA (Food and Drug Administration).

## Utilisation for other applications

### Banner printing capability

As well as store decorations and floor POP displays, the system can be used for long posters, signboards and an extensive range of other applications. The ability to offer promotional proposals with media mixes combined with labels also contributes to business expansion.



Up to 1,200mm long banner poster, POP, calendar, A3 horizontal book jacket, etc.

# High quality digital labels, consistently

High image quality is realised by Konica Minolta's unique technology. Colour variation is controlled, ensuring stable and beautiful finishes from the first print through to the last print. High image quality results in higher value printed output generating additional revenue for the business.

## Multi-gradation data processing at a high resolution

High resolution 3,600 (equivalent) × 1,200dpi × 8bits

Combined with the reproductive capability of digital toner HDE, small characters and fine lines can be printed clearly and colour images beautifully output with rich gradations.

## Cutting-edge image processing technology

S.E.A.D. V

The AccurioLabel 230 features Konica Minolta's Image processing technology, S.E.A.D. V. This is backed up with new generation of image processing, ASIC and these fully automated colour adjustment functions promise to provide print products with the best quality.



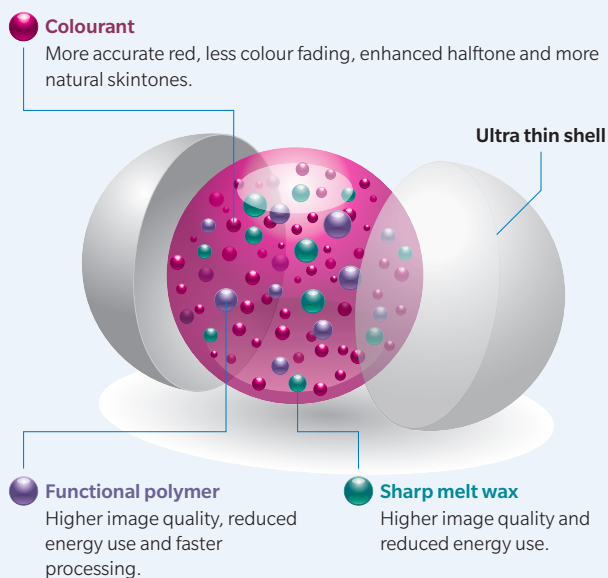
## High quality with energy-saving

Simitri HDE toner

A 3D hybrid structure that contains functional polymers ensures a high level of compatibility with various types of media and enables realisation of ideal natural textures. In addition, it requires only a small amount of heat for fusing, significantly reducing power consumption.



### 3-dimensional hybrid toner particles



### Blue Wool Test:

The results according to ISO 105 B2 (lightfastness test)

Cyan 8 <sup>*1</sup>	Magenta 6-7
Yellow 8	Black 8 <sup>*1</sup>

Remarks: The evaluation criteria is classified into 8 levels (1 to 8 levels), and the higher the value, the higher the lightfastness.

<sup>\*1</sup>: The test results indicate that the lightfastness of Cyan and Black toner is ranked as 8 or higher.

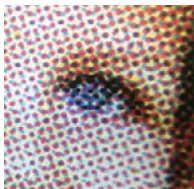




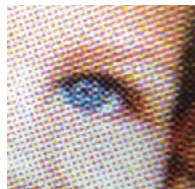
## Selectable screens according to the application

### High quality screens

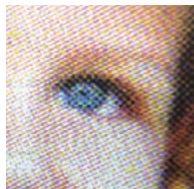
Equipped with a total of 12 types of screen, 6 dot screens, 3 line screens and 3 stochastic (FM) screens, the system can be matched to specific applications or purposes such as proofing output, photograph printing and moiré suppression.



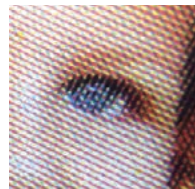
Rough screen  
Dot 130L



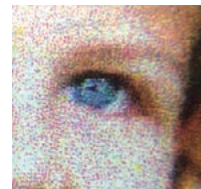
Standard screen  
Dot 190L



Fine screen  
Dot 270L



Line screen  
Line 180L



Stochastic screen  
FM-1

## Superb small text & thin line quality

### Line thinning & edge enhancement technologies

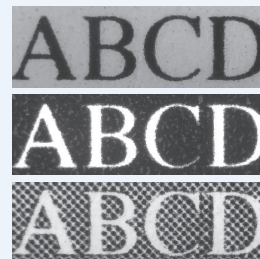
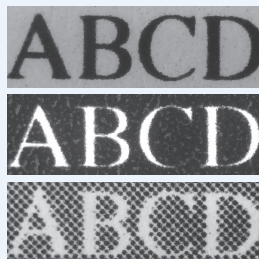
The AccurioLabel 230 offers a precise outline processing function that reduces blurring and streaking to realise high quality even for colour or outline characters. Characters on food or ingredients labels, for example that tend to be small, or barcodes can be printed clearly.

Offset printing 5pt fonts



Line thinning:  
OFF  
Edge enhancement:  
OFF

AccurioLabel 230

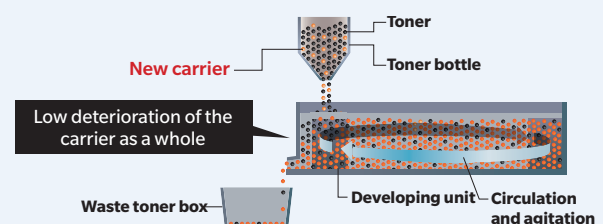


Line thinning:  
Normal  
Edge enhancement:  
Strong

## Stabilised developer

### Auto-refining developing system

A new carrier is supplied together with the toner to refresh the carrier in the developer, stabilising the developer condition to maintain high image quality throughout the lifetime of the system. The longer developer life also minimises downtime.



# Outstanding Operability

When compared to traditional label printing technologies including flexography, liquid development and inkjet, the AccurioLabel 230 ensures maintenance tasks can be performed with ease.

Tasks that take time on analogue machines such as colour adjustments can be performed with ease on a digital machine. The ability to perform operations simply by following on-screen prompts makes it possible to operate the machine with little time needed for training.

## Colour Management Utility

### Color Centro

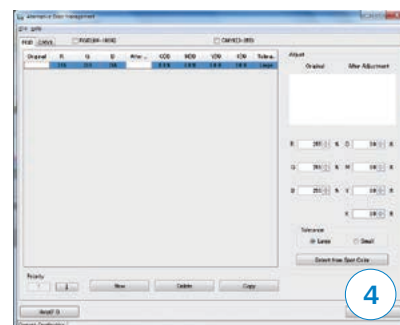
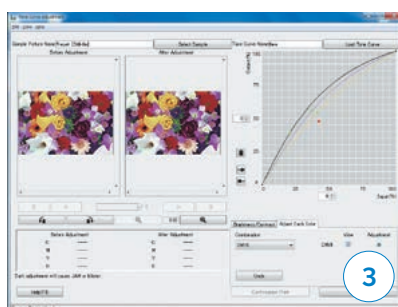
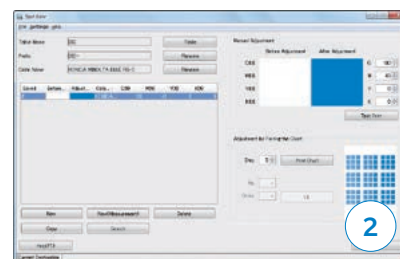
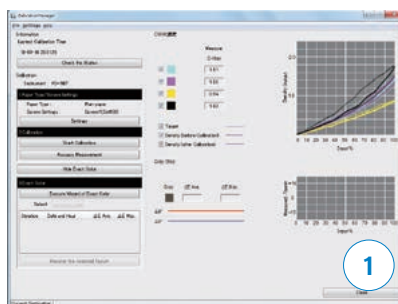
The AccurioLabel 230 is equipped with colour management software as standard, allowing operation, editing and setting for colour correction, colour profile creation, etc.

**1 Calibration** – Screen to implement calibration. Calibration accuracy can also be checked on the same screen.

**2 Spot colour editing** – A function to set special colours designated by the user. Capable of registering colours directly by selection from the colour chart.

**3 Tone curve adjustment** – A function to allow effortless adjustment of contrast and brightness according to preference.

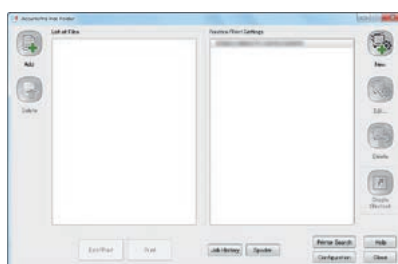
**4 Colour replacement** – A function to replace selected colours with others.



## Simplified printing operation

### AccurioPro Hot Folder

The AccurioPro Hot Folder allows you to directly print a PDF or TIFF file without starting an application. You can also preset the job settings and reduce the burden of making print settings.



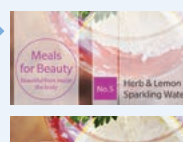
## Equipped with the latest Adobe PDF Print Engine

### APPE 4.6

The AccurioLabel 230 is equipped with Adobe genuine APPE 4.6. The capability to directly print PDF files without using the print driver enables faithful reproduction of transparency. Optional UK-218 (APPE kit) required.



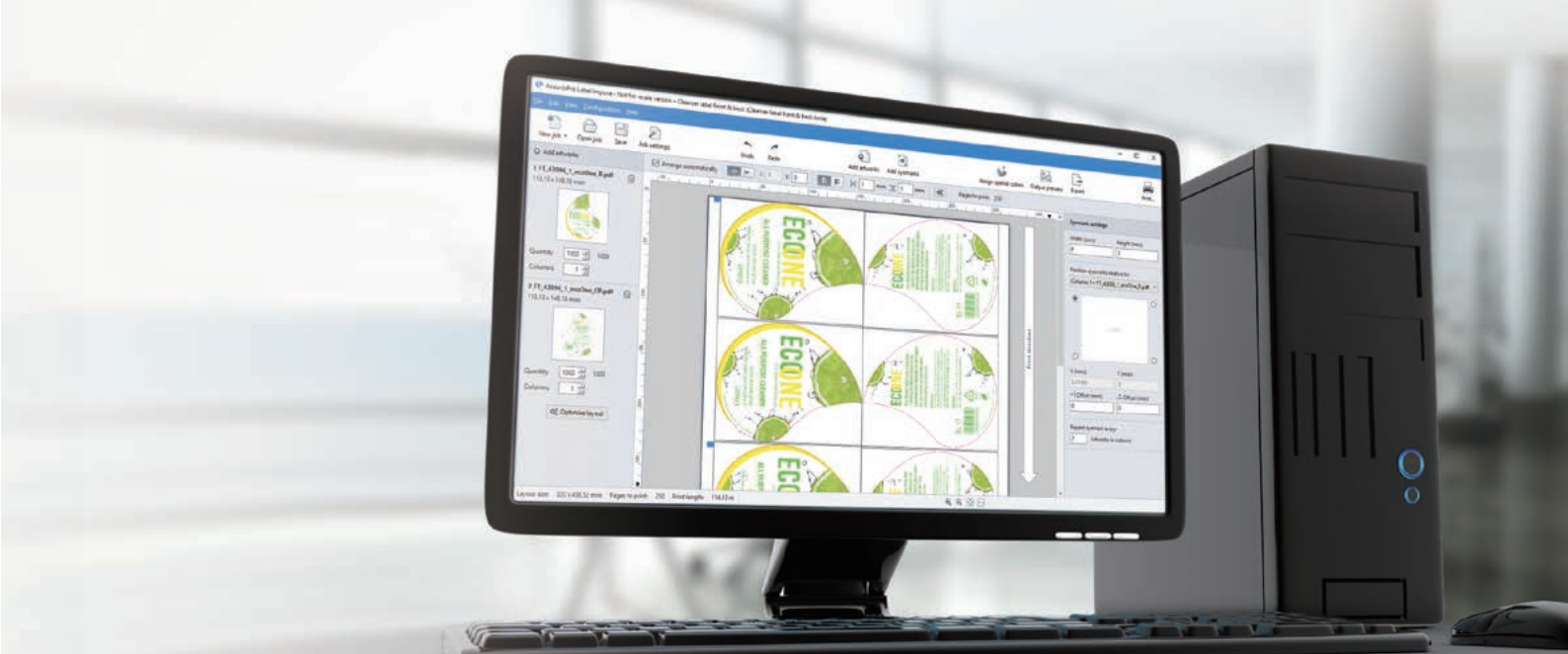
**Original data**  
Transparency applied.



**Processing by CPSI**  
Transparency processing failed.



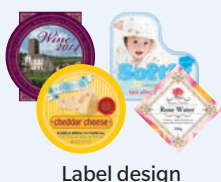
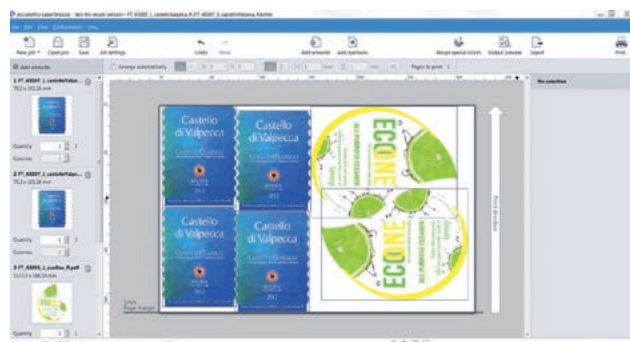
**Processing by APPE**  
Transparency faithfully reproduced.



## Indispensable tool for automated label printing

### AccurioPro Label Impose

The AccurioPro Label Impose software tool provides the perfect solution. The application not only gives operators a simple and intuitive interface to automatically impose and prepare label jobs for printing. At the same time, the software also enables users to create PDFs as basis for the corresponding cutting tools on the die cutting equipment. Working seamlessly with the AccurioLabel 230, AccurioPro Label Impose perfectly complements Konica Minolta's label press!



Label design



VDP input (PDF/VT)

Import

Import

### AccurioPro Label Impose



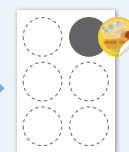
- Layout
- Variable data handling
- Die cutting tool, etc.

Print

Export data for cutting tool



AccurioLabel 230



## Key features

**Automatic creation of label repetitions:** The application automates the creation of label repetitions on the label web.

**Variable data content:** The processing of variable data content is simple and can easily be incorporated into the automatic label repetitions.

**Adjustable spacing:** Operators have the freedom to adjust the spacing between columns and rows individually and as required.

**Adding standard and custom eye marks:** The application offers complete flexibility in adding standard and custom eye marks in any desired position for offline finishing.

**Arranging artwork:** Users can choose between automatic and manual arrangement of artwork for the label layout.

**Gang-up printing:** A single sheet can be imposed with just one or various selected artwork motifs.

**Die cutting tools:** With the ability to detect additional separations (die lines, spot varnish, foil, etc.) and export them to PDF, AccurioPro Label Impose facilitates the production of the die cutting tools and enables additional decorations on labels.

### Recommended hardware requirements

Operating systems	Windows 7/8.1/10 Pro (64bit)
Memory	4 GB RAM
Disk space	1 GB
CPU	Intel i5 dual core or equivalent
Screen resolution	1,280 × 720 pixels

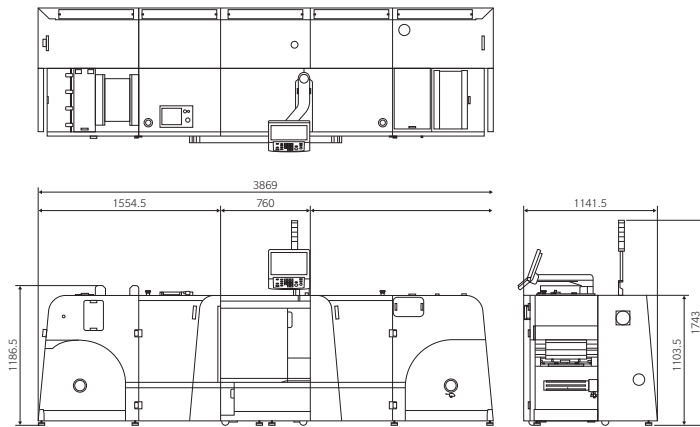


# Specifications

## AccurioLabel 230 (Printer main body only)

<b>Type</b>	Console
<b>Print method</b>	Dry-toner electrophotography
<b>Colour support</b>	Full colour (CMYK)
<b>Printing resolution/gradation</b>	3600 dpi (equivalent) × 1200 dpi / 8 bit
<b>Printing image size</b>	90 × 115 to 320 × 1,195 mm
<b>Paper width</b>	250 to 330.2 mm
<b>Paper thickness range</b>	81 to 256 gsm (80 to 250 µm)
<b>Print media</b>	Non-tack paper (81 to 176 gsm) Tack paper (136 to 256 gsm) Tack coated paper G/M (136 to 256 gsm) Tack Synthetic paper (136 to 176 gsm) Tack PP (136 to 176 gsm) Tack PET (136 to 216 gsm)
<b>Print speed</b>	<b>Speed range</b> Max.: 23.4 m/min. (76 fpm) High: 18.9 m/min. (62 fpm) Middle: 13.5 m/min. (44 fpm) Low: 9.45 m/min. (31 fpm)
	<b>By media weight</b> 81 to 176 gsm: Max. 23.4 m/min. 177 to 256 gsm: Max. 18.9 m/min.
<b>Compatible file formats</b>	PS, PDF (APPE supported), 8 bit TIFF
<b>VDP file format</b>	PPML, PDF-VT
<b>Power source (Single phase)</b>	Metric: 220 to 240 V 50/60 Hz, 20 A
<b>Max. power consumption</b>	Metric: 6,000 W, Inch: 5,760 W
<b>Dimensions (W × D × H)</b>	1,200 × 903 × 1,478 mm
<b>Weight</b>	292 kg

\* Specifications and features of the delivered product are subject to changes.



## RW-110/RW-210

<b>Maximum roll size</b>	Ø 620 mm
<b>Paper thickness</b>	80 to 250 µm
<b>Power supply for the unit</b>	200 to 240 V AC 20 A 50/60 Hz and PE RCCB that breaks at a leakage current of 350 mA
<b>Air supply</b>	5 to 6 bar (72 to 87 psi) > 20 L/min (5 gal/min) Air must be clean, oil and water free
<b>Dimensions (W × D × H)</b>	3,869 × 1,141 × 1,103 mm
<b>Weight</b>	650 kg

## Embedded controller

<b>Type</b>	Embedded (AIO) type Equivalent to IC-605B with UK-104
<b>CPU</b>	Intel Core i5 4570S 2.9 GHz (CPU in printer)
<b>Memory</b>	System Memory 16 GB
<b>HDD</b>	1 TB × 3 + 500 GB × 1
<b>Network</b>	10/100/1000 Base-T
<b>PDL Language</b>	PostScript 3 (CPSI 3020), PDF Ver.1.7, TIFF Ver.6 Compliant, PPML Ver.2.2, PCL5c equivalent, PCL XL (PCL6 Ver.3) equivalent, APPE Ver.4.6*1, PDF/VT Ver.2*1
<b>Protocol</b>	TCP/IP, NetBEUI, IPP, WSD, SMB, Bonjour
<b>OS applicable</b>	Windows 7, 8.1, 10 Windows Server 2008/R2, 2012/R2, 2016, 2019 (Includes 64 bit versions) Mac OS X 10.9, 10.10, 10.11, 10.12, 10.13, 10.14
<b>Main fonts</b>	Adobe 136 fonts, PCL 80 fonts
<b>Driver</b>	PS Plugin driver
<b>Konica Minolta applications applicable</b>	PS Web Connection, PS Net care Device Manager, Color Centro, AccurioPro Hot Folder

\*1 UK-218 (Option) required

## AccurioLabel 230



\*1 Optional



### Ecology & Environment

KONICA MINOLTA copiers and multi-functional products are designed with the environment in mind.

- Energy Star
- Eco-conscious Toners
- RoHS Compliance
- Production at ISO Certified Factories
- WEEE Compliance



### Requirements for safe use.

- Please read and follow the instruction manual to ensure safe operation.
- Only operate using appropriate power supply and voltage.
- Connecting the earth wire to an inappropriate place may cause explosion or electric shock. Please connect accordingly (Taiwan and the Philippines only).



KONICA MINOLTA

Product appearance, configuration and/or specificants are subject to change without notice.

The Konica Minolta logo and the symbol mark, are registered trademarks or trademarks of Konica Minolta Holdings, Inc. bizhub, PageScope, Simitri and the Emperon logo are registered trademarks or trademarks of KONICA MINOLTA BUSINESS TECHNOLOGIES, INC. Windows is registered trademark of Microsoft Corporation in the United States and other countries. Adobe and PostScript are registered trademarks or trademarks of Adobe Systems Incorporated. All other brand and product names are registered trademarks or trademarks of their respective owners.

Printed on a Konica Minolta AccurioPrint C2060L

Konica Minolta  
Business Solutions Australia Pty Ltd

Free Call 1800 789 389  
konicaminolta.com.au