



KONICA MINOLTA

Giving Shape to Ideas

CLASS LEADING OFFICE PERFORMANCE



bizhub
C3851/C3351

Multifunction Printers

High Performance

Speed and quality contribute to improved office performance

High-speed printing

Delivers high-speed printing at 38 PPM¹/33 PPM² in both colour and black-and-white modes (A4 portrait). Fast output even when printing a large number of copies.

1. C3851
2. C3351

Compact design

With its compact design (width: 555 mm; depth: 584 mm), the bizhub C3851 series can fit in small spaces like the backroom of a store, beside a desk in a SOHO environment, or in the corner of a partitioned work space in a large office. In addition, using a wireless kit³ makes it possible to connect to an office Wi-Fi network, further expanding the range of possible places for installation.

3. Upgrade Kit UK-216, the Local Interface Kit EK-P05 or Local Interface Kit EK-P06

1,650 sheets

Equipped with a 650-sheet large-capacity paper unit as standard. The use of optional paper units can increase the capacity to a total of 1,650 sheets⁴.

4. 80 g/m²

i-Option expands range of functions

Paper documents are scanned to PDF or OOXML. As the file format that is best suited to the operation or objective can be selected, i-Option expands the range of secondary uses for documents.

- The OCR feature makes it possible to conduct full-text searches
- Images and text can be re-used in Microsoft Office and other applications

File conversion formats and required options (i-Option)

	LK-102 v3	LK-105 v4	LK-110 v2
PDF/A (long-term archiving)	●		●
Web-optimised PDF (linearised PDF)	●		●
Encrypted PDF (digital ID)	●		●
Searchable PDF (OCR)		●	●
Compact, high-resolution PDF			● ^{*5}
OOXML file (extension: .docx/.xlsx/.pptx) conversion			●
OOXML file (extension: .docx/.xlsx/.pptx) conversion + OCR Max. Image Size		● ^{*6}	●

5. The pptx conversion function comes as standard, but LK-105 v4 or LK-110 v2 is required for the OCR function.

6. Supports pptx files only.

* To use the above options, the optional Upgrade Kit UK-211 is required.

C3851	C3351
Colour Output 38 ppm	Colour Output 33 ppm
BW Output 38 ppm	BW Output 33 ppm
Resolution 1,200 dpi	
Maximum paper capacity 1,650* sheets (80g/m ²)	

*When the two optional 500-sheet paper units are added.



Base unit

Base unit with copy desk

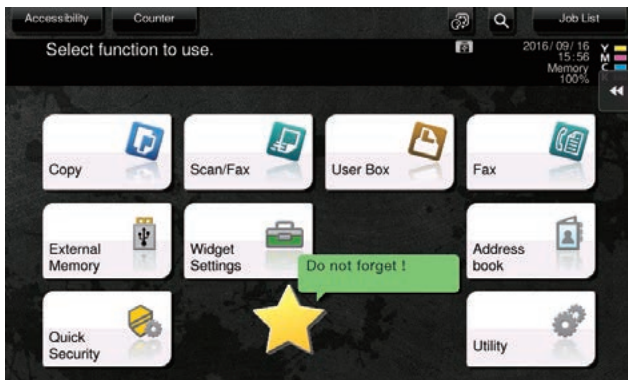
Base unit with additional paper trays and copy desk

Usability

Simple and intuitive, offering excellent usability for all users

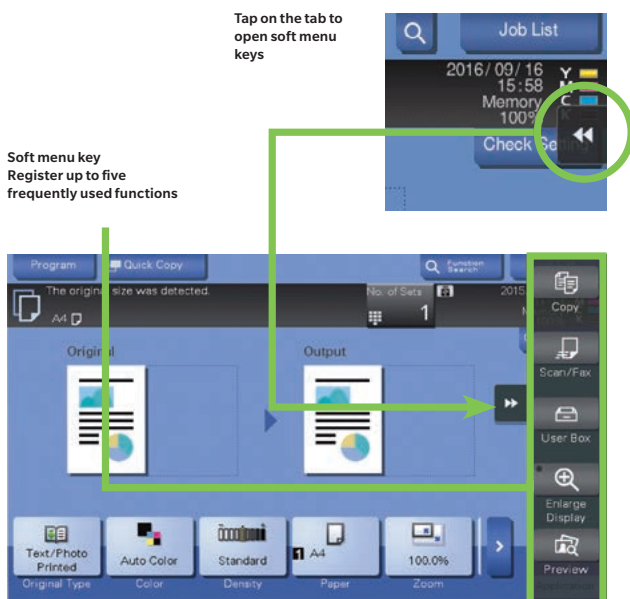
Widget feature

Built-in widget function enables textboxes, icons, and GIF animation to be posted onto the operation panel. Use this function just like sticky notes to share such information as operating precautions, operating rules, and in-house messages.



Slide menu

In addition to the four hard registration keys, five soft menu keys are also available for one-touch activation of functions. Assign frequently used functions (e.g. copy, fax, open numeric keypad) to these keys for improved operability.



Large 7-inch operation panel

The operation panel's intuitive design allows users to operate with just the swipe of a finger. Has the same user interface as A3 multifunction printers and therefore is easy to use.



The soft numeric keypad has been revised to enable faster input.

Connecting to NFC-enabled mobile devices

Android devices

The operation panel is equipped with the Mobile Touch Area, which is compatible with devices that support Near Field Communication (NFC). Pairing¹ is available from Android devices via PageScope Mobile. Print a file by selecting it in PageScope Mobile and holding the Android device over the Mobile Touch Area. Scan² documents to save data. If authentication is required, the user can log in by holding an Android device over the Mobile Touch Area.

1. Android devices must have Android OS 4.4 or higher.
2. A wireless LAN environment is required.

iOS devices (via Bluetooth LE)

Users can search for and register³ nearby bizhub units in PageScope Mobile⁴ via Bluetooth Low Energy (LE)⁵. If user authentication is required, log in using Bluetooth LE. Print³ or scan³ via wireless LAN by selecting a bizhub unit that is registered in PageScope Mobile.

3. A wireless LAN environment is required.
4. PageScope Mobile for iPhone/iPad Version 5.0 or higher is required.
4. The optional Local Kit EK-P06 is required.

Network

Diverse connectivity promotes efficient workflow

AirPrint

Apple's standard printing system compatible with iOS 4.2 and Mac OS 10.7 or later. A compatible printer on your wireless LAN can be used.



Mopria Print Service

Wireless printing technology provided by Mopria Alliance. Allows you to print from devices installed with Android 4.4 or later.



Google Cloud Print

With the compatible software installed, you can print from any location via the internet regardless of OS or device types.



* Google Cloud Print Setup and Google account registration are required.

Konica Minolta Print Service

The Konica Minolta Print Service is an application which lets you print directly from devices running Android 4.4 (KitKat) or later. Documents such as photographs, web pages and PDF files can be printed easily via a wireless LAN.



PageScope Mobile for iPhone/iPad, Android and Windows

Using PageScope Mobile, an app offered by Konica Minolta, access a wide range of bizhub functions including double-sided printing, 2-in-1 printing, secure printing, and staple/punch printing.



bizhub Remote Access

Install bizhub Remote Access¹ to operate the bizhub unit's operation panel remotely from a mobile device. Enable various settings (e.g. configure sleep mode settings, register abbreviated addresses, manage document files stored in boxes, and configure MFP settings) from a remote location in the office.

1. Download Android version from Google Play, and iOS version from the App Store (free of charge).

* MFP operation panel cannot be used when bizhub Remote Access is in use.

* The device used for remote operation must be connected to the same network as MFP.

Wireless LAN

With the simple AP (Access Point) mode² a single bizhub C3851 series unit can set up a local wireless LAN environment by itself, enabling external mobile devices to get a secure connection without the need for an internal LAN. For greater convenience, use PageScope Mobile³ to read the QR code displayed on the operation panel to establish a wireless connection between a mobile device and the bizhub unit.

2. The optional Upgrade Kit UK-216 and Local Connection Kit EK-P05 or EK-P06 are required.

3. PageScope Mobile for iPhone/iPad and Android



QR code display screen

bizhub C3851 series Wireless LAN/Simple AP mode



* In simple AP (access point) mode, up to four devices can be connected simultaneously.

Security

High-level security to address risks in multiple ways

Various authentication capabilities

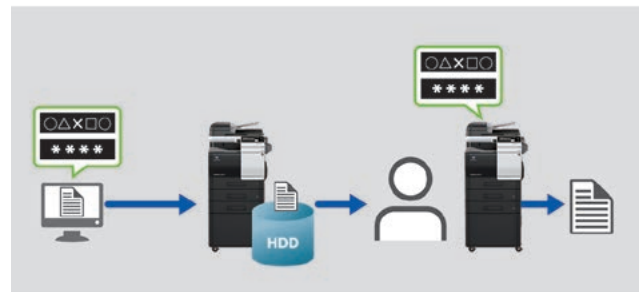
A built-in authentication system can be found on the operation panel, allowing the administrator to set restrictions on copying, scanning, faxing¹, printing, using external memory, and using Box functions for each user and department. It also supports user authentication² with contactless IC cards,³ biometric authentication² using the user's finger vein patterns, and authentication on NFC-enabled Android devices*

1. Optional Fax Kit FK-517 required.
2. Device Connection I/F Kit EK-P05 or EK-P06 required in addition to optional IC Card Authentication Unit AU-201S and Mounting Kit MK-P02.
3. Supports contactless IC cards include FeliCa (IDm), SSFC, FCF, FCF (campus), and MIFARE (UID).
4. Android device that runs Android OS 4.4 or higher and supports Host Card Emulation (HCE), and PageScope Mobile for Android Version 4.1 or higher are required.



Secure printing

When printing, set up a password on the printer driver screen to store print data in the bizhub unit's hard disk. It will not print unless authenticated by entering the same password on the operation panel. A useful function for printing confidential documents or for restricting receivers of the document.

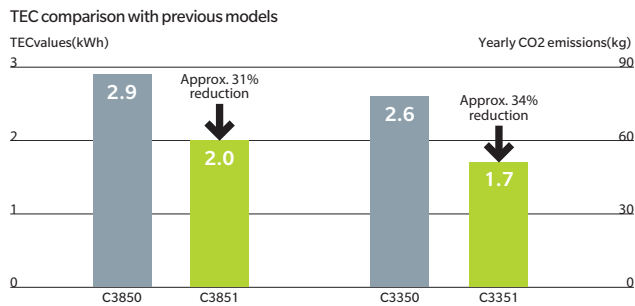


Ecology

An energy-efficient, resource-saving design

TEC values

With its energy-efficient design, the bizhub C3851 series easily clears the standard energy consumption (TEC) values defined in International Energy Star Program Version 2.0. Compared with previous models, its TEC has decreased by approximately 31%-34%, while its CO2 emissions have also dropped.



Power consumption

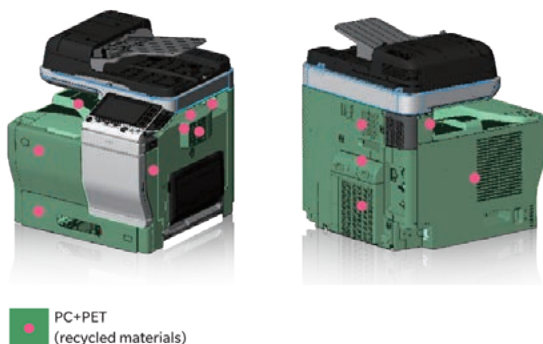
We have improved bizhub units' power-saving logic (e.g. turning off MFP's CPU during sleep mode) and successfully cut power usage during sleep mode to 0.5 W, contributing to reducing the environmental impact and the total cost of ownership (TCO).

Global environmental standards

We address global environmental issues by ensuring our products' compliance with the requirements of the International Energy Star Program, which aims to develop and introduce energy-efficient office appliances. Our products also comply with the environmental standards adopted by countries with high environmental awareness. We are committed to work from a broad range of perspectives to reduce our environmental impact.

Usage of recycled materials

To reduce our environmental burden, we use recycled PC/PET which we developed with our proprietary cutting-edge chemical processing technology. Of the surface area of the bizhub C3851 series, 47.7% is made using recycled PC/PET. The registration keys in the operation panel are made with recycled bio-plastic materials.





Data Sheet

DESCRIPTIONS

	bizhub C3351	bizhub C3851
	A4 multifunctional with 33 ppm b/w and colour. Standard Emperon™ print controller with PCL, PostScript and XPS support. Paper capacity of 550 sheets and 100-sheet manual bypass. Automatic duplex document feeder and duplex unit standard. 2 GB memory, 250 GB hard disk.	A4 multifunctional with 38 ppm b/w and colour. Standard Emperon™ print controller with PCL, PostScript and XPS support. Paper capacity of 550 sheets and 100-sheet manual bypass. Automatic duplex document feeder and duplex unit standard. 2 GB memory, 250 GB hard disk.
PF-P13 Paper tray	A4, 500 sheets, 60 – 90 g/m ²	A4, 500 sheets, 60 – 90 g/m ²
DK-P03 Copier desk	Provides storage space for print media, etc.	Provides storage space for print media, etc.
FS-P03 Off-line stapler	20-sheet corner stapling	20-sheet corner stapling
KP-101 10-Key pad	For use instead of touchscreen	For use instead of touchscreen
WT-P02 Working table	Off-line stapler placement, etc.	Off-line stapler placement, etc.
FK-517 Fax board	Super G3 fax, digital fax functionality	Super G3 fax, digital fax functionality
EK-P07 Interface cable for CSRC modem	GPRS modem connection for CSRC	GPRS modem connection for CSRC
ID card reader	Various ID card technologies	Various ID card technologies
LK-102v3 PDF enhancements	PDF/A (1b), PDF encryption, digital signature	PDF/A (1b), PDF encryption, digital signature
LK-105v4 OCR text recognition	Searchable PDF and PPTX, PDF/A (1a)	Searchable PDF and PPTX, PDF/A (1a)
LK-106 Barcode fonts	Supports native barcode printing	Supports native barcode printing
LK-107 Unicode fonts	Supports native Unicode printing	Supports native Unicode printing
LK-108 OCR A and B fonts	Supports native OCR A and B font printing	Supports native OCR A and B font printing
LK-110v2 Document converter pack	Generates various file formats incl. DOCX, XLSX and PDF/A	Generates various file formats incl. DOCX, XLSX and PDF/A
LK-111 ThinPrint® client	Print data compression for reduced network impact	Print data compression for reduced network impact
LK-115v2 TPM activation	Trusted Platform Module for protection of data encryption and decryption	Trusted Platform Module for protection of data encryption and decryption
MK-P02 Mount kit	Installation kit for ID card reader	Installation kit for ID card reader
UK-216 Wireless LAN	Wireless LAN and wireless LAN Access Point Mode	Wireless LAN and wireless LAN Access Point Mode
EK-P06 USB I/F kit	USB keyboard connection, Bluetooth	USB keyboard connection, Bluetooth
UK-211 Upgrade kit	2 GB memory extension for upgrades	2 GB memory extension for upgrades
KH-P01 Keyboard holder	To place USB keyboard	To place USB keyboard



Technical Specifications

SYSTEM SPECIFICATIONS	bizhub C3351	bizhub C3851
System memory (standard/max)	2 GB/4 GB	2 GB/4 GB
System hard disk	250 GB (standard)	250 GB (standard)
Interface	10/100/1,000-Base-T Ethernet; USB 2.0; Wi-Fi 802.11b/g/n (optional)	10/100/1,000-Base-T Ethernet; USB 2.0; Wi-Fi 802.11b/g/n (optional)
Network protocols	TCP/IP (IPv4/IPv6); SMB; LPD; IPP; SNMP; HTTP; HTTPS	TCP/IP (IPv4/IPv6); SMB; LPD; IPP; SNMP; HTTP; HTTPS
Frame types	Ethernet 802.2; Ethernet 802.3; Ethernet II; Ethernet SNAP	Ethernet 802.2; Ethernet 802.3; Ethernet II; Ethernet SNAP
Automatic document feeder	Up to 50 originals; A5 – A4; 50 – 128 g/m ² ; reverse automatic document feeder	Up to 50 originals; A5 – A4; 50 – 128 g/m ² ; reverse automatic document feeder
Printable paper size	A6–A4; customised paper sizes	A6–A4; customised paper sizes
Printable paper weight	60 – 210 g/m ²	60 – 210 g/m ²
Paper input capacity (standard/max)	650 sheets/1,650 sheets	650 sheets/1,650 sheets
Paper tray input (standard)	550 sheets; A6 – A4, 60 – 210 g/m ²	550 sheets; A6 – A4, 60 – 210 g/m ²
Paper tray input (optional)	2 x 500 sheets; A4, 60 – 90 g/m ²	2 x 500 sheets; A4, 60 – 90 g/m ²
Manual bypass	100 sheets; A6 – A4; custom sizes; 60 – 210 g/m ²	100 sheets; A6 – A4; custom sizes; 60 – 210 g/m ²
Automatic duplexing	A4; 60 – 210 g/m ²	A4; 60 – 210 g/m ²
Finishing modes (optional)	Staple (off-line)	Staple (off-line)
Output capacity	Max.: 250 sheets	Max.: 250 sheets
Stapling (optional)	Max.: 20 sheets (off-line stapling)	Max.: 20 sheets (off-line stapling)
Copy/print volume (monthly)	Rec.: 6,500 pages Max. ¹ : 96,000 pages	Rec.: 6,500 pages Max. ¹ : 120,000 pages
Toner lifetime	K:13,000; CMY: 12,000 pages	K:13,000; CMY: 12,000 pages
Imaging unit lifetime	K: 60,000; CMY: 50,000 pages	K: 70,000; CMY: 60,000 pages
Power consumption	220 – 240 V/50/60 Hz; Less than 1.7 kW	220 – 240 V/50/60 Hz; Less than 1.7 kW
System dimensions (W x D x H)	555 x 584 x 603 mm	555 x 584 x 603 mm
System weight	Approx. 49.2 kg (without options)	Approx. 49.2 kg (without options)

PRINTER SPECIFICATIONS

Print resolution	600 x 600 dpi 1,200 x 1,200 dpi (reduced speed)	600 x 600 dpi 1,200 x 1,200 dpi (reduced speed)
Page description language	PCL 6 (XL 3.0); PCL 5c; PostScript 3 (CPSI 3016); XPS	PCL 6 (XL 3.0); PCL 5c; PostScript 3 (CPSI 3016); XPS
Operating systems	Windows Vista (32/64) Windows 7 (32/64) Windows 8 (32/64) Windows 10 (32/64) Windows Server 2008 (32/64) Windows Server 2008 R2 Windows Server 2012 Windows Server 2012 R2 Windows Server 2016 Macintosh OS X 10.x Linux Unix Citrix	Windows Vista (32/64) Windows 7 (32/64) Windows 8 (32/64) Windows 10 (32/64) Windows Server 2008 (32/64) Windows Server 2008 R2 Windows Server 2012 Windows Server 2012 R2 Windows Server 2016 Macintosh OS X 10.x Linux Unix Citrix
Printer fonts	80 PCL Latin; 137 PostScript 3 Emulation Latin	80 PCL Latin; 137 PostScript 3 Emulation Latin
Print functions	Direct print of TIFF; XPS; PDF (v1.7) and OOXML (DOCX, XLSX, PPTX); secure print; combination; n-up; poster; booklet page order; watermark	Direct print of TIFF; XPS; PDF (v1.7) and OOXML (DOCX, XLSX, PPTX); secure print; combination; n-up; poster; booklet page order; watermark
Mobile Printing	AirPrint (iOS); Mopria (Android); Google Cloud Print (optional); WiFi Direct (optional); Konica Minolta Print Service (Android); PageScope Mobile (iOS/Android/Windows 10 Mobile)	AirPrint (iOS); Mopria (Android); Google Cloud Print (optional); WiFi Direct (optional); Konica Minolta Print Service (Android); PageScope Mobile (iOS/Android/Windows 10 Mobile)

¹ If the maximum volume is reached within a period of one year, then a maintenance cycle must be performed

² Warm-up time may vary depending on the operating environment and usage

– All specifications refer to A4-size paper of 80 g/m² quality.

– The support and availability of the listed specifications and functionalities varies depending on operating systems, applications and network protocols as well as network and system configurations.

– The stated life expectancy of each consumable is based on specific operating conditions such as page coverage for a particular page size (5% coverage). The actual life of each consumable will vary depending on use and other printing variables including page coverage, page size, media type, continuous or intermittent printing, ambient temperature and humidity.

– Some of the product illustrations contain optional accessories.

– Specifications and accessories are based on the information available at the time of printing and are subject to change without notice.

– Konica Minolta does not warrant that any specifications mentioned will be error-free.

– All brand and product names may be registered trademarks or trademarks of their respective holders and are hereby acknowledged.

SCANNER SPECIFICATIONS

	bizhub C3351	bizhub C3851
Scan speed (mono/colour)	Up to 35 ipm	Up to 35 ipm
Scan resolution	Up to 600 x 600 dpi	Up to 600 x 600 dpi
Scan modes	Scan-to-eMail (Scan-to-Me) Scan-to-SMB (Scan-to-Home) Scan-to-FTP Scan-to-HDD Scan-to-USB Scan-to-WebDAV Scan-to-URL Network TWAIN scan	Scan-to-eMail (Scan-to-Me) Scan-to-SMB (Scan-to-Home) Scan-to-FTP Scan-to-HDD Scan-to-USB Scan-to-WebDAV Scan-to-URL Network TWAIN scan
File formats	JPEG; TIFF; PDF; PDF/A (1b); Compact PDF; encrypted PDF; XPS	JPEG; TIFF; PDF; PDF/A (1b); Compact PDF; encrypted PDF; XPS
Scan destinations	2,100 (single + group); LDAP support	2,100 (single + group); LDAP support
Scan functions	Up to 400 job programs	Up to 400 job programs

COPIER SPECIFICATIONS

Copying process	Electrostatic laser copy; tandem; indirect	Electrostatic laser copy; tandem; indirect
Toner system	Simitri® HD polymerised toner	Simitri® HD polymerised toner
Copy/print speed A4 (mono/colour)	Up to 33 ppm	Up to 38 ppm
Autoduplex speed A4 (mono/colour)	Up to 33 ppm	Up to 38 ppm
1st copy out time (mono/colour)	8.1/9.1 sec.	6.2/7.1 sec.
Warm-up time	Approx. 20 sec. ²	Approx. 20 sec. ²
Copy resolution	600 x 600 dpi	600 x 600 dpi
Gradation	256 gradations	256 gradations
Multicopy	1– 9,999	1– 9,999
Original format	Max. A4	Max. A4
Magnification	25–400% in 0.1% steps; auto-zooming	25–400% in 0.1% steps; auto-zooming
Copy functions	Electronic sorting; multi-job; adjustments (contrast, sharpness, image density); proof copy; interrupt mode; colour mode; separate scan; sort/group; combination; original selection; ID card copy; 2-in1; 4-in-1	Electronic sorting; multi-job; adjustments (contrast, sharpness, image density); proof copy; interrupt mode; colour mode; separate scan; sort/group; combination; original selection; ID card copy; 2-in1; 4-in-1

FAX SPECIFICATIONS

Fax standard	Super G3 (optional)	Super G3 (optional)
Fax transmission	Analogue i-Fax	Analogue i-Fax
Fax resolution	Up to 600 x 600 dpi (ultra-fine)	Up to 600 x 600 dpi (ultra-fine)
Fax compression	MH; MR; MMR; JBIG	MH; MR; MMR; JBIG
Fax modem	Up to 33.6 Kbps	Up to 33.6 Kbps
Fax destinations	2,100 (single + group)	2,100 (single + group)
Fax functions	Time shift; PC-Fax; fax forwarding; up to 400 program dials	Time shift; PC-Fax; fax forwarding; up to 400 program dials

SYSTEM FEATURES

	bizhub C3351	bizhub C3851
Security	ISO15408 Common Criteria; IP filtering and port blocking; SSL2; SSL3 and TLS1.0 network communication; IPsec support; IEEE 802.1x support; user authentication; secure print; hard disk overwrite (8 standard types); hard disk data encryption; copy protection (print only)	ISO15408 Common Criteria; IP filtering and port blocking; SSL2; SSL3 and TLS1.0 network communication; IPsec support; IEEE 802.1x support; user authentication; secure print; hard disk overwrite (8 standard types); hard disk data encryption; copy protection (print only)
Accounting	Up to 1,000 user accounts; Active Directory support ID card authentication optional	Up to 1,000 user accounts; Active Directory support ID card authentication optional
Software	PageScope Net Care Device Manager PageScope Direct Print Print Status Notifier Download Manager Driver Packaging Utility	PageScope Net Care Device Manager PageScope Direct Print Print Status Notifier Download Manager Driver Packaging Utility





KONICA MINOLTA

Konica Minolta Business Solutions Australia Pty Ltd

Free Call 1800 789 389
konicaminolta.com.au/home

New South Wales

Konica Minolta House
4 Drake Avenue
Macquarie Park NSW 2113
(02) 8026 2222

ACT

1/55 Wentworth Avenue
Kingston ACT 2604
(02) 6206 6500

Victoria

Level 5, 441 St Kilda Road
Melbourne VIC 3004
(03) 8699 0777

South Australia

L1 84 Greenhill Road
Wayville SA 5034
(08) 8231 2911

Queensland

Level 9, 100 Skyring Terrace
Newstead QLD 4006
(07) 3872 9100

Western Australia

140 Hay Street
Subiaco WA 6008
(08) 6380 3700

bizhub C3851/C3351

Copy	Print	Scan	Fax	Resolution 1,200 dpi	Legal	Scan 35 ipm			
USB Print	USB Scan	Mobile Support	Linux Support	IC-Card Authentication	Bio- plastic	Recycled PC/PET	RoHS Compliance	WEEE Compliance	Production at ISO Certified Factories

1. Optional

Product appearance, configuration and/or specifications are subject to change without notice.

The Konica Minolta logo and the symbol mark, are registered trademarks or trademarks of Konica Minolta Holdings, Inc. bizhub, PageScope, Simitri and the Emperon logo are registered trademarks or trademarks of KONICA MINOLTA BUSINESS TECHNOLOGIES, INC. Windows is registered trademark of Microsoft Corporation in the United States and other countries. Adobe and PostScript are registered trademarks or trademarks of Adobe Systems Incorporated. All other brand and product names are registered trademarks or trademarks of their respective owners.



Ecology & Environment

KONICA MINOLTA copiers and multi-functional products are designed with the environment in mind.

- Energy Star
- RoHS Compliance
- WEEE Compliance
- Eco-conscious Toners
- Production at ISO Certified Factories

⚠ Requirements for safe use.

- Please read and follow the instruction manual to ensure safe operation.
- Only operate using appropriate power supply and voltage.