

KONICA MINOLTA

SECURE + SIMPLE



The new
bizhub i-Series

Giving Shape to Ideas

PRINT TECHNOLOGY THAT JUST WORKS SO YOU CAN GET ON WITH WORK

With technological, social, environmental and generational shifts impacting on work priorities, the workplace of today is evolving. And so too is the Konica Minolta bizhub i-Series.

The enhanced bizhub i-Series offers a range of new features and combines ease of use with powerful security for a print solution without compromise. Empowering employees to achieve their objectives and helping them thrive.

All-round simplicity

The bizhub i-Series devices come with a clear, customisable user interface, the ability to group apps and rapid troubleshooting with remote support. Your business will benefit from improved output quality, reliable paper feeding, and increased device availability – helping everyone get more done every day.

Powerful security

From advanced virus protection* with clear notifications and status reporting, to proactive security management that detects (and can even predict) threats, you'll have peace of mind knowing your information and your business are safe and secure.

* optional for multi-function printers



READY FOR THE BEST OF BOTH WORLDS?

Security AND simplicity. They're built into the new Konica Minolta bizhub i-Series to give you the best of both worlds.

Simple + a lot more

- **User-friendly experience** – enjoy using an updated, intuitive and logical user interface that offers flexible customisation options
- **Your apps at your fingertips** – organise apps on the bizhub i-Series user interface for rapid access to the functions you use the most
- **Cloud ready** – take advantage of seamless integration with popular cloud applications directly from the user panel
- **Productivity boost** – the enhanced intelligent media sensor* automatically detects the paper type to maintain an increased productivity
- **Higher availability** – remote and predictive maintenance help maximise device availability and reduce the possibility of issues arising and maximising uptime

Secure + a lot more

- **Protection** – against viruses, malware, cyber-attacks and unauthorised access
- **Prevent problems before they happen** – once a device is secured, it stays secure;
- **Visibly secure** – advanced virus protection (optional), with clear notifications and status reporting that let you decide how to process jobs
- **Compliant** – no concern for data privacy standards – can easily be set up to be fully compliant with GDPR

* Intelligent Media Sensor is standard on C451i, C551i, C651i and C751i. Optional on C251i, C301i, C361i and A3 Monochrome iSeries models.



SECURE+
SIMPLE

THE DEVICE THAT HAS IT ALL

With a clear, logical interface and flexible customisation options that adapt to your needs, the updated i-Series range delivers an intuitive user experience that helps boost productivity.



Flexible customisation

- The new i-Series offers an intuitive smartphone-style experience that's so familiar, there's practically no learning curve. Users can customise their screens in the same way as their mobile devices, and put the apps they use regularly on the home screen for quick access.
- In the Quick Copy screen, users can see all the main setting options without scrolling or searching. They can apply their desired settings with fewer clicks and pop-ups, helping them to work more efficiently and be more productive.
- Users can customise their personal home screens by adding or removing function icons, and group apps in the way that works for them. A user can, for example, group all scan-related apps or all ID-related (ID copy and ID scan) apps.
- Widgets – similar to the Widgets on Android phones – are also supported, enabling users to embed app-delivered functionality on their home screens.



Cloud ready

- Directly from the user panel, you can set up seamless integrations with popular external cloud apps – such as SharePoint Online, OneDrive, OneDrive for Business, MS Teams, Google Drive, Dropbox and Box.com* – to meet your needs and maximise your productivity.

* Requires Konica Minolta MarketPlace. Additional charges apply.



Enhanced accessibility and usability

- Our devices are designed with high usability in mind. We follow industry-leading universal design guidelines to make them accessible to anyone regardless of age, experience or special needs.
- We use colour and colour-coding to make things easy to use and keep users safe. Paper trays and toner cartridges are easily accessible and the automatic document feeder can be lifted with little physical effort and silently closed thanks to hinges with soft-close.
- With a 24° to 90° tilt angle, the large 10.1" tablet touch panel provides convenient operation for all users, whether standing or sitting.



BOOST YOUR OFFICE DEVICES

Did you know you can enhance your office devices with powerful cloud services, without worrying about compromising the security of document handling?

Konica Minolta MarketPlace, our pre-installed app and service store, has everything you need. It lets you find and download apps, add-ins and connectors – including third-party authentication apps and connectors to cloud repositories* – straight from any compatible bizhub office device. So you can enhance the device with additional features that streamline everyday work

* Additional charges apply



Powerful cloud connectivity

Simply connect your office printer to popular cloud services like SharePoint Online, OneDrive, Google Drive or MS Teams for basic file/folder operations, scanning to cloud repositories and selecting files for printing – directly from the printer panel.



Personalised user experience

Tired of not finding the printer functions you want? With MarketPlace, you can create a personalised user interface with the design and features that fit your workflows and put the features you need the most on the control panel. The user interface can also be adapted to reflect your company's branding by, for example, adding a background image containing your company's logo and graphics.



KONICA MINOLTA
MarketPlace

Discover how Konica Minolta MarketPlace can help you enrich your daily business activities with powerful apps and services – directly from your bizhub device:
au.konicaminoltamarketplace.com

SMART SECURITY TO KEEP YOUR BUSINESS SAFE

Nothing matters more than the security of your vital business data and the challenge with print security and its infrastructure is twofold – protecting the devices and protecting the data and documents that they output.

Only 19% of organisations are completely confident in the security of their print infrastructure, this rises to 26% amongst organisations using Managed Print Services. Overall, a further 50% say they are mostly confident. This reflects the growing complexity and challenges associated with securing both devices and documents across a hybrid workplace.

Source: Quocirca Print Security Landscape 2023

With our new bizhub i-Series you can rest assured that your devices, data and documents are secure. Numerous security features are built into our devices, supported by industry-leading antivirus technology from Bitdefender®.

bizhub SECURE service offers a range of levels so it can be tailored to your needs:



- Protects the data in the memory of your i-Series device
- Protects your i-Series from cyber attacks using data encryption
- Ensures files are stored only for usage, and are deleted in a timely manner if not used



SECURE YOUR DOCUMENTS USING CLOUD SERVICES

Cloud print services featuring innovations such as Follow Me printing and Secure Print enable organisations to:

- Simplify their print operations
- Modernise their print infrastructure in response to changing working practices
- Enhance workforce agility
- Improve data protection and document security

With Konica Minolta, you have a holistic digital workplace partner at your side, ready to support you at every stage of your cloud journey. Through a rich portfolio of services and solutions we can help you access the operational, management and cost benefits of cloud print.

Konica Minolta is recognised as a 'Major Player' in Quocirca's report 'The Cloud Print Services Landscape, 2023 – How the cloud is driving print infrastructure modernisation'.



FIVE REASONS TO CHOOSE THE CLOUD

2 Full cost control facilitates planning

Low initial investment.
You only pay for what you actually use.

1 Reduced workload and peace of mind

Locally hosted cloud solutions with high availability and ISO certification.

3 Maximum data security

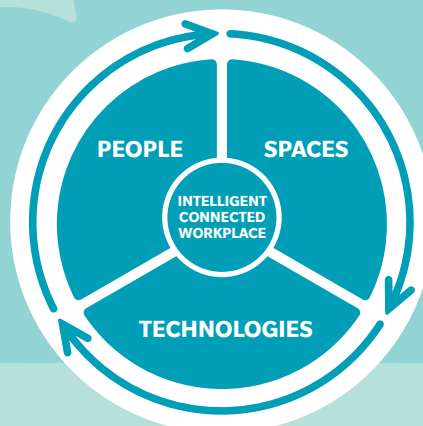
Your data is in good hands and stored securely in a certified Australian Data Centre that complies with the GDPR regulations.

4 Fit for the future with unlimited possibilities

Cloud and hybrid services offer maximum flexibility and scalability to keep your business' IT infrastructure growing.

5 Say goodbye to outdated systems

We provide state-of-the-art hardware and software, as well as any necessary updates.



POWERFUL CLOUD SOLUTIONS TO MEET YOUR INDIVIDUAL NEEDS

SAFEQ Cloud

SAFEQ Cloud is an all-in-one cloud-native multi-tenancy print management and scanning solution that offers the flexibility and benefits of software-as-a-service (SaaS).

It's designed to help organisations reduce the cost and complexity associated with a traditional setup – while maintaining all the features of a familiar print management solution and delivering one-touch scanning.

SAFEQ Cloud®

PaperCut Hive

PaperCut Hive is a simple, powerful print management solution in the cloud. It offers convenient print release options, copy and scan tracking and quick onboarding for users and guests.

Cloud-native, fully embedded print management software for businesses that need a secure and flexible printing solution to track, control and enable print, copy, and scan.

PaperCut™
Hive

BENEFITS AT A GLANCE



Better Cost Planning

Fixed so you always keep a perfect overview



Quick and easy implementation

Rapid deployment, easy updates and fast adoption



Secure printing

Follow-me authentication ensures that your document does not fall into the wrong hands



Improved data and document security

Certified data centres and encryption ensure your data and documents stay safe and secure



Mobile Working

Cloud print services are accessible and usable from anywhere



Print as usual, but at reduced costs

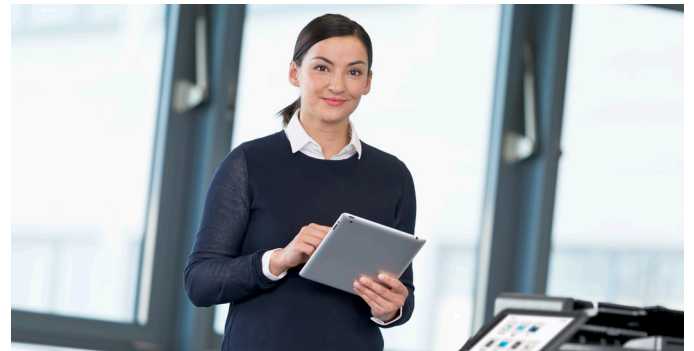
You continue to use your MFP and benefit from reduced costs as well

REMOTE SERVICES: INSTANT SUPPORT WITH INSTANT ACCESS

To make the bizhub i-Series work better for everything you do, we set out to rethink everything we do.

We implemented the Konica Minolta Remote Service platform, which ensures trouble-free operation and maximises device uptime.

To keep things running smoothly, i-Series devices intelligently collect data for self-diagnostics and remote maintenance, and even predict the optimal replacement time for parts and consumables – without unnecessary engineer visits or business interruptions. You can expect system uptime improvements, as well as a reduction in security risks through the initial secure configuration and required maintenance updates.

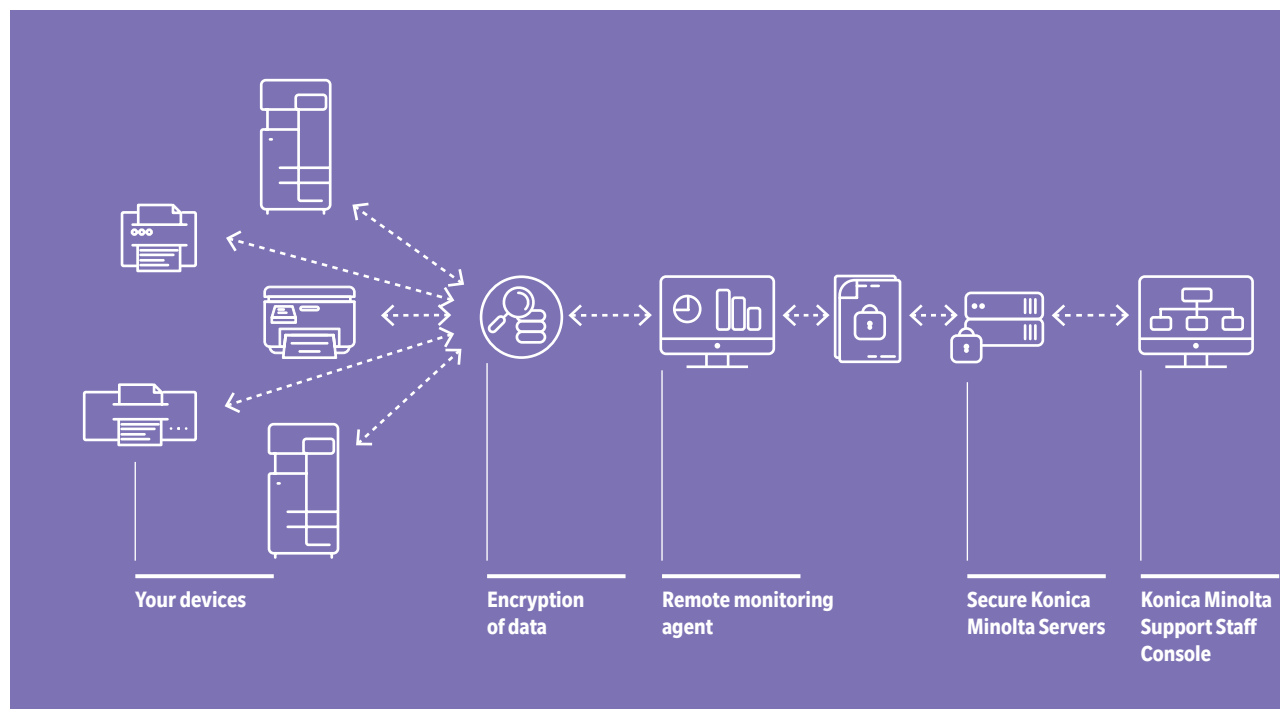


Your benefits:

- Fewer calls to the service desk
- Reduced need for onsite engineer visits
- Maximised device uptime
- Devices that are always up to date

HOW A REMOTE CONNECTION WORKS

You can rely on our Remote Services – they offer you assured security: all data is encrypted end-to-end, ensuring totally safe communication.





INDUSTRY-LEADING ENVIRONMENTAL PERFORMANCE

We develop and manufacture our devices with the objective of continually reducing their environmental impact at every stage of the product lifecycle: design, production, supply chain and transport, through to usage and recycling or disposal.

Every lifecycle stage is carefully monitored in terms of general input-output analysis, energy and resource efficiency, recycling and waste prevention – as well as compliance with relevant environmental and safety regulations.

Procurement:

- Reduction in number of parts
- Use of recycled materials
- Prohibiting use of hazardous substances

Manufacturing:

- Energy and resource conservation
- Use of renewable energy
- Product compactness
- Waste reduction

Logistics & Sales:

- Optimisation of logistics
- Compliance with transportation standards
- Reduction in and recycling of packaging materials
- Appropriate labelling

Recycling:

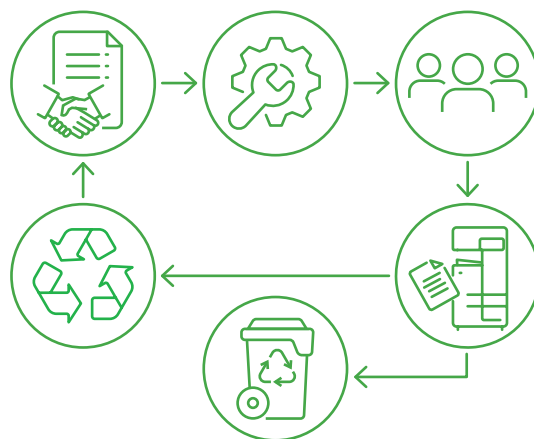
- Easier disassembly and recycling
- Implementation of recovery programmes

Product use:

- Energy and resource conservation
- Extension of product life
- Ensuring safety during use
- Appropriate labelling and information

Disposal:

- Easier disassembly
- Prohibition of use of hazardous substances



We've made substantial investments to keep the environmental impact of the bizhub i-Series as low as possible.



Minimised power consumption

With system settings like low power mode, sleep mode, power-saving fax/scan mode, and further functions like timer and calendar, dynamic eco timer, eco print and eco info, you can significantly reduce the power consumption of your bizhub devices.



Recycling technology to upgrade material properties

Konica Minolta has developed a recycling technology that can upgrade material properties, enhance the strength and flame retardancy of waste plastics, based on a polymer alloy technology accumulated through the development of toner. This technology allows recycled plastics to be used for parts covering 88% of the entire surface area of the MFPs.



Simitri® V toner

With the polymerised Simitri® V toner used in the bizhub i-Series, we've reduced the fixing temperature by about 15°C compared to previous models. Combined with a new fixing device, this helps to significantly reduce the TEC Value*.



Improved product design

Our devices are designed to be smaller and lighter, saving both raw and packaging materials, as well as greenhouse gas emissions during transport.



Improved packaging

We developed lighter, more compact air cushions that have reduced the device packaging volume by 84% and the packaging weight by 70% compared to conventional polystyrene foam cushioning materials.



Less noise for a more comfortable working environment

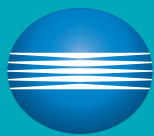
We've taken steps to reduce the noise level during operation, which makes working near our devices even more comfortable.



LED as the scanner light source

We've changed the light source for the scanners in our devices from conventional fluorescent lighting to LED. This delivers power savings and a low heat performance while increasing brightness intensity and scanning speed.

* The TEC value represents an electrical product's typical weekly electricity consumption (TEC) based on average office use, as defined by the US ENERGY STAR program.



KONICA MINOLTA

SECURE+ SIMPLE

The new bizhub i-Series doesn't compromise on anything. When it comes to security and ease of use, our devices deliver the best of both worlds.



KONICA MINOLTA
MarketPlace

