



KIP 770

Exceptional Multi-Function Value



KONICA MINOLTA

SYSTEM
SOFTWARE 

KIP 770

Infinite Possibilities



Smart Multi-Touch Control

- 307 mm Smart Multi-Touch Display
- Touch Simplicity: Swipe, Rotate, Pinch, Spread & Tap
- Intuitive, Tablet Style Touch Controls
- Uniform Operations for Improved Experience
- Walk-Up Operator Convenience
- High Demand Productivity
- View and Print Area of Interest

KIP 770

COMPACT CONSOLE DESIGN

The KIP 770 is the highest value wide format Multi-Function system in the world. It sets new standards for professional quality at a breakthrough value/performance level.

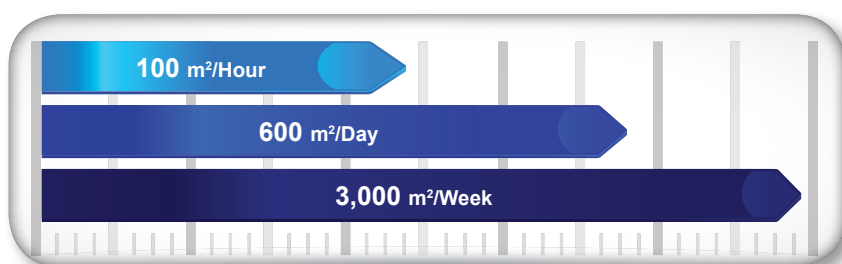


System Features

- Single footprint configuration
- Colour touch controls
- Front print delivery system
- 1 integrated media roll
- 1,6 'A0' size prints per minute
- 600 X 1800 dpi printing
- High definition print technology
- Print from & scan to the cloud
- CIS scanning technology - with Real-Time Thresholding Technology
- Smart Eco² design



KIP 770 Print Production



Integrated USB Drives

KIP 770 systems eliminate the need for additional PC hardware by printing documents directly from the touchscreen software. Integrated support for removable media such as standard USB drives provides the ability to securely print documents directly from a range of media formats.

BUILT
for the workgroup,
DESIGNED
FOR THE
individual.

KIP 770

SYSTEM CONVENIENCE

The compact design of the KIP 770 provides front access to the touchscreen, auto roll paper loading, system operation & copy/print delivery.



KIP 770

PAPER VERSATILITY

Paper tray for standard sizes up to 18" x 24" / 420 mm x 594 mm extends the range of print sizes that can be produced without switching rolls.

Paper Tray Page Sizes



A4

210 mm x 297 mm



A3

297 mm x 420 mm



A2

420 mm x 594 mm

Paper Roll Page Sizes



297 mm



420 mm



594 mm



841 mm



914 mm



SYSTEM SOFTWARE **K**

A new generation of wide format functionality

We invite you to experience the intuitive interface, extensive functionality, advanced navigation and cloud collaboration for your production environment. KIP System K Applications are uniformly integrated with KIP Multi-function Systems for smarter colour and B&W copy, scan and print solutions.

SYSTEM K

MULTI-TOUCH SCREEN

KIP Multi-Touch Control

All system functions for the KIP 70 Series are performed through an integrated, 307 mm multi-touch style colour display to copy, print and scan both colour and B&W documents.



Vivid 307 mm Colour Multi-Touch Display | Fully Articulating Viewing Angle | Print, Copy and Scan in B&W and Full Colour* | Super View for Swipe, Pinch, Spread and Rotate | Print Directly from Removable Media, the Cloud and Local Mailboxes | Full Colour User Guides | Integrated Print Previews | View and Print Area of Interest | On-screen Set Copy Editor | Manage History Queue | Optional KIP Color Plus for Copy and Print in Full Colour*



KIP Colour Copy & Print Plus

KIP Colour Copy & Print Plus expands the capabilities of the KIP 70 Series System by connecting to up to three networked colour printers.



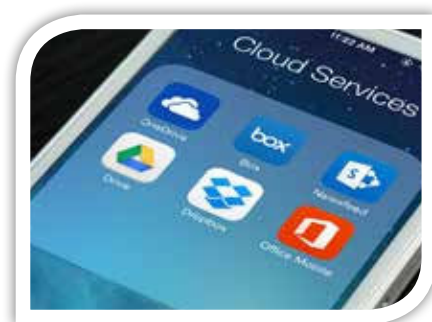
Full Size Colour Preview with Super View | Guest Printer Connection via IP Address | Quick Closed Loop Calibration for Accurate Document Reproduction | Simultaneous Operation of Colour and B&W Functions | Real-Time Image Preview | Full Screen Colour Preview | Advanced Colour Image Enhancement | Preview Colour Adjustments

KIP Cloud Connect

Sharing online content via popular Cloud Services has become a critical collaboration tool. Scan to and print from the cloud directly at the multi-touch display.



Select from Multiple Cloud Services | Print from KIP Cloud Connect | Scan to KIP Cloud Connect | Unlimited Cloud Connections | Single or Multiple Files | Choose Files from Multiple Cloud Services for Single Print Job | Easy Configuration from Multi-Touch Screen | Collated Sets Printing





SYSTEM K

Windows® Driver

The KIP Windows® Driver Pro is Microsoft® WHQL certified, meeting exact standards of reliability and quality.



Fast Spooling for Multiple Copies or Sets | Displays Real-Time System Status | Information Set Collation | Provides Current Media Information | Media Selection | Secure PIN Printing | Send Job on Hold | Save Templates | Brightness Adjustment | Unlimited Image Quality Presets | Pen Preset Selection



AutoCAD® Driver

The KIP certified AutoCAD® Driver provides integrated printing from within Autodesk® software applications such as AutoCAD®, AutoCAD® LT and DWG TrueView.



Fully Compatible with Current Versions of AutoCAD® | True HDI AutoCAD® Driver | 32 and 64 Bit Operating System Compatibility | Real-Time Media Status | Custom Media Size Configuration | Media Saving by Auto Rotation | Advanced Colour Mode Image Type Selection | Dither Pattern Control for B&W Lines vs Aerial

KIP Data Security Features

At KIP, security is paramount. As a world leader in the development of digital wide format production technology, KIP is committed to keeping digital information safe and secure.



Image Overwrite | Removable Hard Disk Drive Accessory Kit | System K Operating System Windows® Embedded System 7 | Standard Security Updates | Data Encryption and Virus Scanning Applications | KIP Secure Print



KIP Print Management Applications provide intuitive productivity for professional results across the full range of KIP Colour and B&W Systems.

KIP PrintPro

Designed for Windows® PC's, KIP PrintPro is an intuitive system management and print submission application for the complete range of KIP Colour and B&W Systems.



Multiple Copies or Collated Sets | WYSIWYP Image Preview | Individual File Settings for Job Matrix Templates | Multi-Page Settings | Colour Adjustments and Filter Selections | Email Notification | Customise Job Build Matrix Windows | Document Folding and Stamping | HPGL Pen Preset Selection | Windows® 7/8 and Vista Compatible (32 and 64 Bit) | Customise System and Folder Presets | Manage Print Queue | KIP Secure Print



KIP PrintPro.net

KIP PrintPro.net provides KIP Colour and B&W Systems with the most feature rich browser based print submission and system management application on the market.



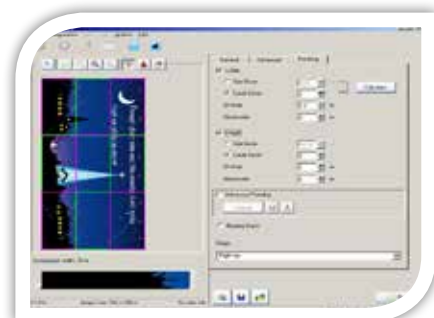
Multiple Copies or Collated Sets | WYSIWYP Image Preview | Individual File Settings for Job Matrix Templates | Multi-Page Support | Colour Adjustments and Filter Selections | Email Notification | Document Folding and Stamping | HPGL Pen Preset Selection | Transfer Files from KIP Printer Mailbox | Customise System and Folder Presets | Manage Print Queue and User Settings | KIP Secure Print

KIP GraphicPro

KIP GraphicPro is a full featured RIP for graphic and technical production printing on KIP Colour Systems that fully supports graphic and technical production printing.



Unlimited Workstation Licenses | B&W, Grayscale and Colour Printing | Job Editor for Mixed B&W and Colour Sets | Multi-Page PDF/TIF | Filter Editor for Colour Control | ICC Profile Support for CMYK and RGB Colour Management | Factory/Custom Media Profiles | Nesting Single and Multiple Images | Automatic Horizontal and Vertical Paneling | Area of Interest (Zoom to Area and Print) | B&W and Colour Editing Tools | Job Monitor



KIP Smart Print & Scan

KIP Smart Print & Smart Scan are flexible approaches to delivering print and scan services – one that responds to mobile business needs by providing a driverless cloud solution.



Submit Print Ready Files via Email Attachments | Works with any Web Enabled KIP Printer | Print B&W or Colour Documents | Scan Full Size Documents | Choose an Area of Interest | Remote Scan Auto-Archived or Printed by KIP Printer | Optional Keywords Provide Expanded Flexibility

KIP Accounting Center

The KIP Accounting Center consolidates control of user account data and printing rules for all copy, print and scan activities for KIP Colour and B&W Systems. All System K Print Submission Apps are integrated with KIP Accounting Center.



Username and Two Customisable Fields | Import User Data Using LDAP | Clear Fields After Each Job Submission | ASCII Import/Export | Easily Update User, Project and Department Data | Automated KIP System Update via Scripting | Password Protect any or all Data Entries | No Special Data Servers Required



KIP Cost Center

The KIP Cost Center application retrieves extensive log files directly from KIP Systems and automatically generates production reports for user, project and department level accounting data.



Integrated with all KIP Apps and Touchscreen Systems | Track Colour and B&W Copy, Scan and Print | Easy to Understand Graphical Reports | Average Toner Coverage by Percent | Daily Print and Scan Volume for Colour and B&W | User, Project and Department Categories | Access the Details of the Last 100 Jobs | KIP Toner Costs by Colour and B&W | KIP Maintenance Costs | KIP Scanner Costs by Colour and B&W

KIP Card Reader Systems

KIP offers customers two solutions to secure the KIP Systems using contactless card readers.



Contactless Card System Integration: Standard FeliCa Cards | Various Contactless Cards | User Authentication Linked to Card | Load User and System Presets | Load User Cloud and SMB Credentials | Track Usage by Card | Release User Jobs at Touchscreen | KIP Accounting Center Integration | KIP Cost Center Integration

Common Access Card Solution: Enables/Disables Network Access | Designed for Easy Installation | Meets Homeland Presidential Security Directive (HSPD-12) | Local and Network User Authentication Using LDAP or Active Directory | Netgard MFD In-Line Network Appliance



KIP Printer Status / SNMP

The KIP Printer Status application is the ideal solution for providing centralised status updates and information to administrators and users over a local or Wide Area Network.



SNMP Communication to KIP Printer | PC Based Windows® 7/8 Application | Monitor Status of KIP Printers | Auto Detect KIP Printer (LAN) | Visual Notification for Machine Status | View all KIP Printers on a Single Screen | Automated Meter Read

SYSTEM SOFTWARE K

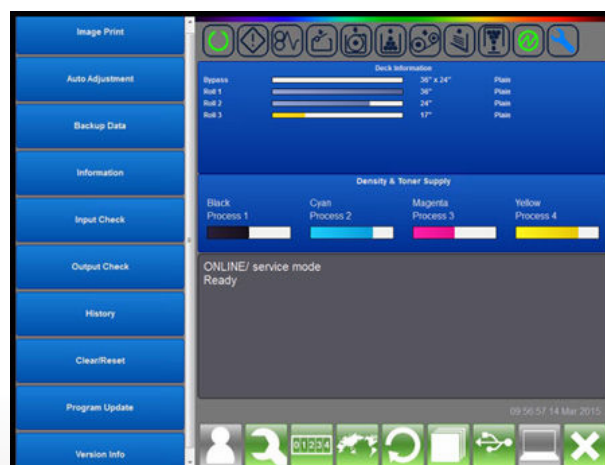
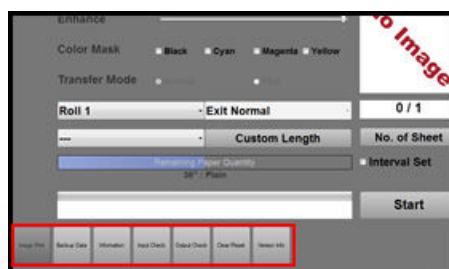
Print Management Solutions

KIP Touchscreen Technical Interface

The KIP Touchscreen Technical interface is a comprehensive program for the control of KIP Systems, Installation & Technical Support.

The touch intuitive and versatile interface includes mode tiling which simplifies the technical experience and management of the KIP System.

- Integrated with KIP Colour plus Black & White Systems
- Manage and Modify Printer Functions and Settings
- Review Printer Status and Operational History

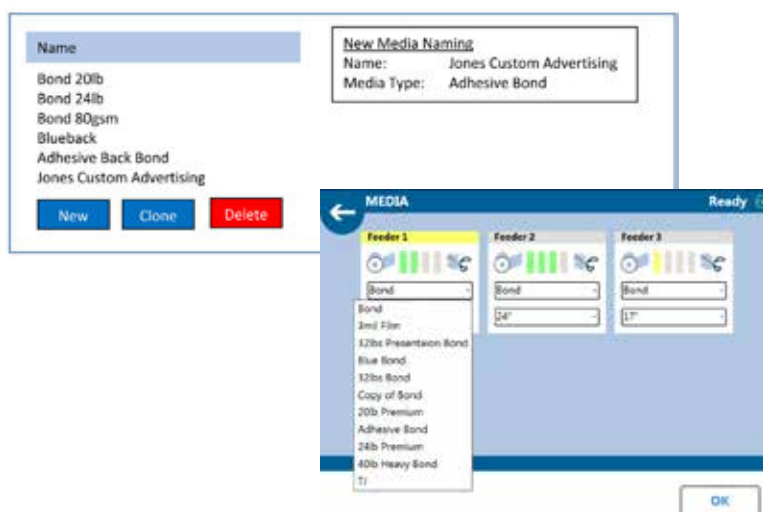


Print Management Solutions

KIP Custom Media Manager

The KIP Custom Media Manager is a graphic user interface that allows the operator to identify and customize names to a wide range of media types and the KIP Systems specifications.

- Integrated with KIP Colour plus Black & White Systems
- Automatically Adjust Systems Parameters
- Descriptive Media Categories



KIP 770

EXCLUSIVE TECHNOLOGIES

High Definition Print (HDP) Technology

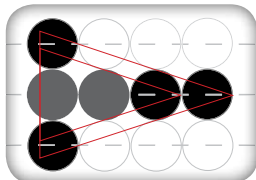
KIP HDP is a green technology that is 100% toner efficient, reducing the cost of printing and returning outstanding value and industry leading low cost of ownership. KIP Systems do not employ carriers, developers or waste receptacles that require disposal and replacement.



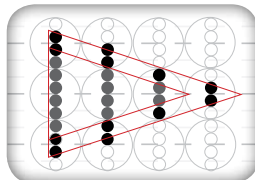
100% toner efficiency

600 x 1800 dpi – High Resolution

KIP Systems feature crisp, 600 x 1800 dpi printing for sharper details and extremely smooth grayscales. This higher resolution allows the system to enhance curves, diagonal lines and arcs by smoothing out line edges with excellent precision.



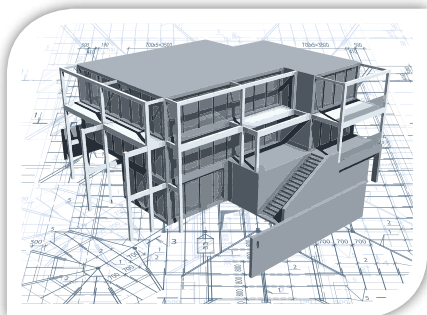
600 dpi x 600 dpi



600 dpi x 1800 dpi

Consistent Print Quality

KIP Systems deliver solid blacks, smooth grayscale and uniform print quality from the first to the last page of a print job. Advanced technologies including automatic environmental adjustments and contact-based developer units keep your print quality on track through seasonal climate changes.



Media Capacity

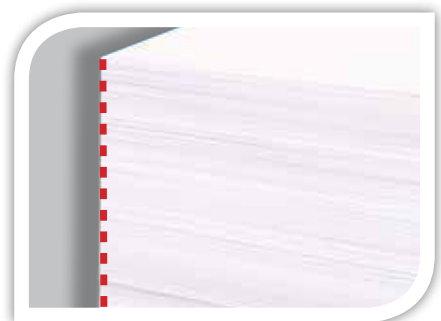
The automated paper loading of the KIP 770 accepts up to a 152 meter roll of media (2"/52 mm or 3"/76 mm core) up to 36"/914 mm wide.



Auto Media Loading

Accurate Print Sets

KIP Systems provide precise cut lengths that conform to KIP sheet size specifications. Electronic monitoring of media while printing provides an accurate page cut length. Print jobs are produced at an identical sheet size, resulting in a professional presentation.



KIP precision cutting
for accurate sheet sizes

KIP 770

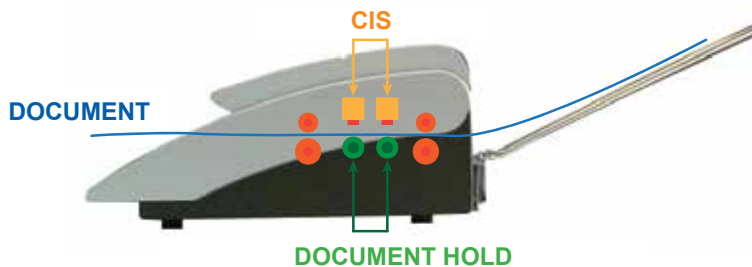
SCANNING SYSTEM

KIP 770 Integrated CIS Scanning System

The KIP 770 integrated large format scanner is a 24-bit, 36" / 914 mm wide full-colour image capture system perfect for processing photographs, complex maps and AEC/CAD drawings. The CIS (Contact Image Sensor) scanning technology enables high-resolution, high-speed image capture with energy saving operation from a compact design.

System Features:

- Create colour copies directly to inkjet printers
- Scan to a wide range of file formats
- Real-time copy and scan previews
- USB printing and scanning support
- On-screen copy, print & scan previews



The KIP 770 integrated scanner features a support system to enhance feed reliability



Copy & scan documents to the cloud or email and create colour copies to up to 3 connected colour print systems

KIP 770

SYSTEM OPTIONS



Integrated paper tray holds up to 30 sheets



Catch tray set holder for managing high print volumes



PDF format printing keycode



Secure hard drive connection kit



KIP 70 SERIES

KIP PREMIER PERFORMANCE & BUILD QUALITY

As a world leader in wide format document production technology, KIP is committed to providing the highest value standards by combining the best in hardware and software technology to create superior products at affordable prices. KIP systems are quality engineered for production class operation and reliability. State-of-the-art printing technologies and advanced self diagnostic systems maintain system productivity to ensure maximum uptime.

The Colour of KIP is Green

KIP is committed to product designs that promote environmental health and sustainability. KIP's goal is to consistently improve and refine the technologies in products that keep our planet green. KIP considers the total product life cycle - from the manufacturing process to final device disposal in our shared ecosystems.



KIP Systems print on
recycled paper



Reduced electrical
consumption



Environmental Responsibility

SMART SOLUTIONS - INFINITE POSSIBILITIES

KIP 770 Multi-Function Systems



KIP 770 with front print delivery system



KIP 770 with front print delivery system
plus optional integrated paper tray

AUTHORISED RESELLER



KONICA MINOLTA
Free call 1800 789 389 konicaminolta.com.au



www.kipoceania.com

KIP is a registered trademark of the KIP Group. All other product names mentioned herein are trademarks of their respective companies. All product features and specifications are subject to change without notice. Complete product specifications are available upon request. © 2015

V10/20/15-EU